

Live seafood must be looked after to ensure good quality!

Firstly, make sure the fish and shellfish you buy from your supplier is healthy as they will be easier to keep healthy in your tanks.

Don't overstock tanks but stock according to species requirements and holding capacity of your system!

Good water quality is essential for healthy fish and shellfish. This brochure provides some basic welfare information to better help you look after your fish and shellfish. For more information please refer to your respective State government website.

- Have plenty of air bubbling in your tanks. The more fish and shellfish, the more air is needed but make sure they can move away from the bubbles, if they want to.
- Bubbling air ensures that there is enough oxygen in the water and also helps remove carbon dioxide (CO₂), which is released by the fish and shellfish. Too much CO₂ can affect water quality.
- Clean your tanks and filters regularly. Water in tanks should always be clear and clean.
- Most fish can go a week without food however some shellfish, (e.g. prawns) may show signs of aggression if not fed. If you need to feed your fish and shellfish, make sure that waste products do not build up in your tanks which could lead to fish and shellfish becoming sick.
- Ideally, the pH (which is a measure of how acid or alkaline your water is) should be similar in your tanks to the water your fish originally came from. The pH level in your freshwater tanks should never fall below 6.
- Check your tanks daily and remove any sick, injured or dead fish or shellfish immediately.

- Tank water and dead fish and shellfish must be disposed of in accordance with local government requirements.
- Do NOT put any chemicals into your tanks when you have live fish or shellfish in them.

Different species of fish and shellfish need different water and none like sudden changes!

- Different species of fish and shellfish have different temperature requirements. Some like warm water, some like cold - please see reverse.
- Likewise, some species of fish and shellfish like freshwater and some like saltwater. Some are happy in between - please see reverse.
- No fish or shellfish like sudden changes in temperature and salinity. Make sure the temperature and salinity in the tank are correct BEFORE putting the live fish and shellfish in the tank.

Kill Fish and Shellfish Humanely!

- Kill fish and shellfish as soon as you take it out of the tank. For fish, acceptable and humane methods include a blow to the head or spike to the brain.
- Whatever method is used, the killing process should not take more than 10 seconds.

Developed by:
Panaquatic Health Solutions Pty Ltd
www.panaquatic.com

This project is supported by funding from the Department of Agriculture as part of the Australian Animal Welfare Strategy.

Photos of coral trout, barramundi, painted crayfish, southern and western rock lobsters, prawns, and Tasmanian giant crab courtesy of FRDC/CSIRO

© PANAQUATIC HEALTH SOLUTIONS PTY LTD

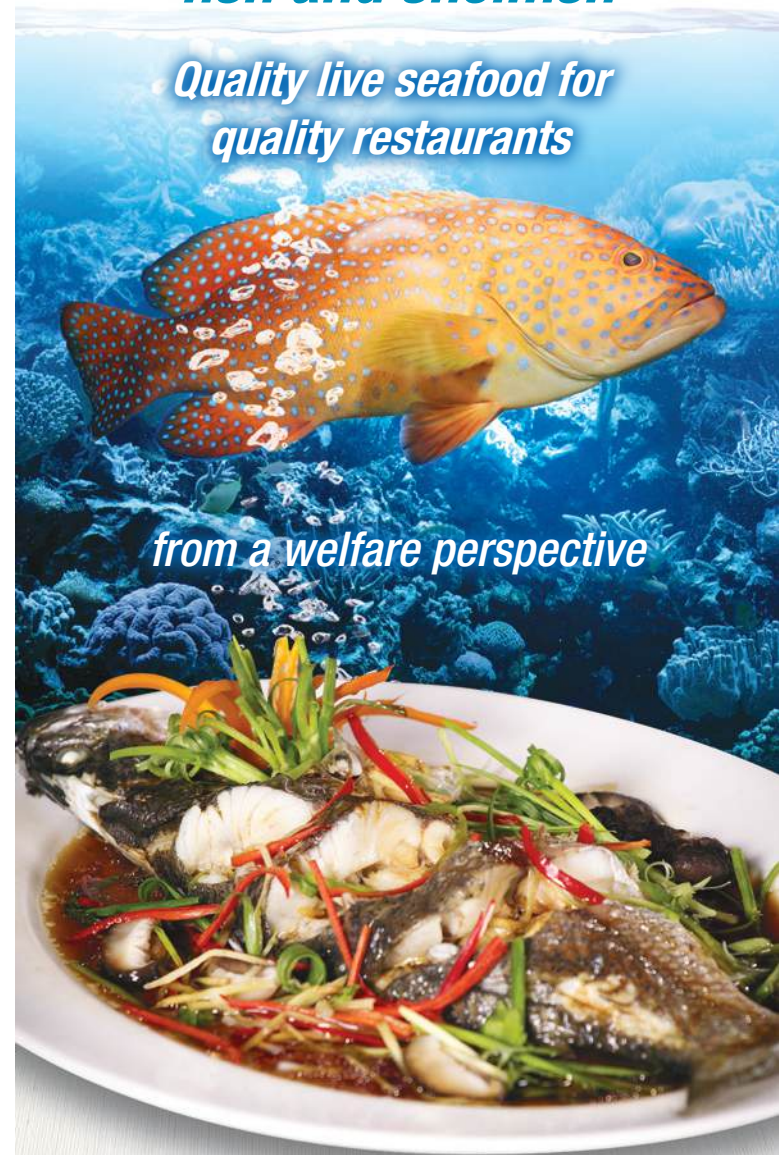

PANAQUATIC

**AUSTRALIAN
ANIMAL
WELFARE
STRATEGY**

Guidelines for restaurants and retailers keeping live fish and shellfish

Quality live seafood for quality restaurants

from a welfare perspective




PANAQUATIC


FRDC
FISHERIES RESEARCH &
DEVELOPMENT CORPORATION

FISH REQUIREMENTS



Water Temperature Requirements



Salinity Requirements

Coral trout (Plectropomus spp.) 红石斑 (花斑刺鳃鲷)



20° - 22.5°C



Mainly Saltwater
(25ppt salt)

Morwong (Cheilodactylus spectabilis) 唇指鲈 (耀唇指鲷)



10° - 15°C



Saltwater
(30-35ppt salt)

Tiger prawns – Sea water (Penaeus monodon)



18° - 22°C



Saltwater
(30-35ppt salt)

Barramundi (Lates calcarifer) 澳洲肺鱼 (尖吻鲈)



20° - 22.5°C



Mainly Freshwater
(5ppt salt)

Parrot fish (Notolabrus tetricus) 鹦嘴鱼 (凶猛背唇隆头鱼)



10° - 15°C

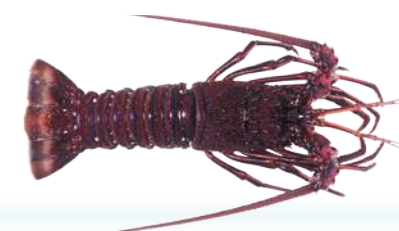


Saltwater
(30-35ppt salt)

Western rock lobster (Panulirus cygnus)



14° - 18°C



Saltwater
(30-35ppt salt)

Jade perch (Scortum barcoo) 宝石鲈 (澳洲宝石鲈)



15° - 20°C



Freshwater
(0 -5ppt salt)

Eels (Anguilla species) 鳗鱼 (澳洲鳗鲡)



12.5° - 17.5°C



Mainly Freshwater
(5ppt salt)

Tasmanian giant crab (Pseudocarcinus gigas)



10° - 15°C



Saltwater
(30-35ppt salt)

Silver perch (Bidyanus bidyanus) 银鲈 (银锯眶鲷)



15° - 20°C



Freshwater
(0-5ppt salt)

Mudcrab (Scylla serrata) 泥蟹 (锯缘青蟹)



20° - 25°C



Saltwater
(30-35ppt salt)

Southern rock lobster (Jasus edwardsii)



10° - 15°C



Saltwater
(30-35ppt salt)

Murray cod (Maccullochella peelii peelii)

墨累鳕鱼 (虫纹麦鳕鲈)



15° - 20°C



Freshwater
(0-5ppt salt)

Painted crayfish (Panulirus ornatus) 花龙虾 (锦绣龙虾)



20° - 25°C



Saltwater
(30-35ppt salt)

Abalone (Haliotis species) 鲍鱼 (鲍螺属)



10° - 15°C



Saltwater
(30-35ppt salt)